

CCA-02E/SLD

- Lower maintenance costs
- Lower power consumption
- New LED technology
- Zones 1, 2, 21, 22

*Tempered glass with
polycarbonate lenses*

*Brackets in
galvanised steel*

*Sun
shades*

Connections



CCA-02E/S...LD LED traffic lights

The new CCA-02E/S...LD series traffic light system is the result of research and development activities into the new LED lighting technology that can achieve optimum light efficiency, immediate power response times and very low power consumption. These Ex d IIC traffic lights are suitable for regulating traffic in chemically aggressive industrial environments or potentially explosive areas classified as Zone 1 - 2 - 21 or 22. It is made of low copper content aluminium and features tempered glass, coloured polycarbonate lenses and painted steel sun shades. The benefits offered by the new CCA-02E/S...LD system are as follows: lower maintenance costs, better visibility in critical conditions thanks to the LED lamps, better reliability thanks to the guaranteed continuous light even if one LED fails and, lastly, the lack of any "phantom" effect.

Application sectors:



CERTIFICATION DATA

Classification: 94/9/EC

Group II

Category 2GD

Installation: EN 60079.14

zone 1 - zone 2 (Gas)

zone 21 - zone 22 (Dust)

Marking:

CE 0722 Ex II 2GD Ex d IIC T6 Gb - Ex tb IIIC T... Db IP 66

Certification:

ATEX CESI 01 ATEX 036

IECEx TSA 06.0012

GOST R AVAILABLE

All IEC Ex and GOST R certification data can be downloaded at www.cortemgroup.com

Standards:

CENELEC EN 60079-0: 2006, EN 60079-1: 2007, EN 61241-0: 2006, EN 61241-1: 2004 and EUROPEAN DIRECTIVE 94/9/EC: 1994
IEC 60079-0: 2004, IEC 60079-1: 2003, IEC 61241-0: 2004, IEC 60079-1: 2004

Class temperature:

85°C (T6)

Ambient temperature:

Standard
-20°C +55°C

Special
-40°C +55°C

Degree of protection:

IP66

CCA-02E/S...LD LED traffic lights



ORIGINAL PRODUCT

MECHANICAL FEATURES

Body and internal ring:	Low copper content aluminium alloy
Internal frame and bracket:	Aluminium
Sun shades:	Galvanised steel
Gasket:	Acid/hydrocarbon resistant NBR
Glass face:	Shock and high temperature resistant tempered glass
Fresnel lens:	Polycarbonate
Coloured lens	Red, yellow and green in polycarbonate
Bolts and screws:	Stainless steel
Mounting:	See "CCA-02E/S...LD series dimensional drawings"
Entries:	1 x 3/4" Rc UNI ISO 7/1
Coating:	Epoxy coating Ral 1003 (Signal yellow)
Corrosion Resistance:	The STANDARD of the aluminium alloy used by Cortem has passed the tests required by standards EN60068-2-30 (hot/humid cycles) and EN60068-2-11 (salt mist tests)

ELECTRICAL FEATURES

LED:




- 4 LEDs installed on plate (if one or more of the LEDs fails, the lamp keeps on working)
- High resistance to vibration (longer lifespan if installed in severe operating conditions)
- Estimated lifespan 50,000 hours
- Maintenance costs estimated to be about one tenth compared with systems currently in use

Power supply:	High efficiency electronic system. Protection against short circuit, overloading and restore system
Rated voltage:	230Vac $\pm 10\%$
Rated frequency:	50/60 Hz
Connection:	Direct entries for cables to terminal board L, N, Pe. Max section 4mm ²
Power factor:	0.96
Wiring:	Silicone rubber cables with glass braid protection against high temperatures

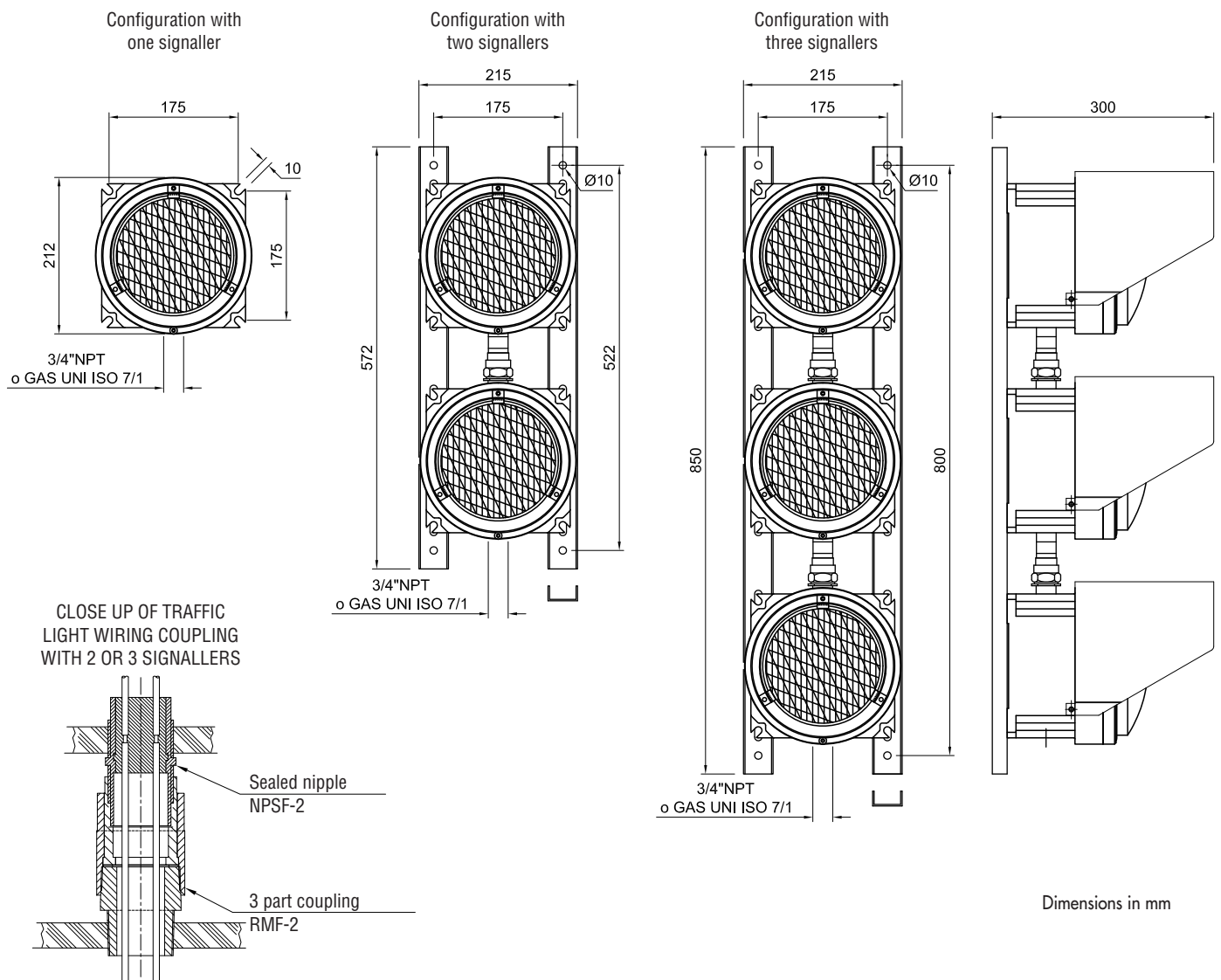
ACCESSORIES AVAILABLE / SPECIAL REQUESTS

Cable gland: FGAB2NBK for armoured cable or FB2NBK for non-armoured cable
Rated voltage 24Vdc (code CCA-02E/S2LD**24**)

CCA-02E/S...LD series selection chart

Code	LED colour	Number of signallers	Watt	Weight Kg	 mm
CCA-02E/S1-1LD	GREEN	1	6W	8	190x190x320
CCA-02E/S1-2LD	YELLOW	1	6W	8	190x190x320
CCA-02E/S1-3LD	RED	1	6W	8	190x190x320
CCA-02E/S2-4LD	GREEN + RED	2	6W	16	230x580x320
CCA-02E/S2-5LD	GREEN + YELLOW	2	6W	16	230x580x320
CCA-02E/S2-6LD	RED + YELLOW	2	6W	16	230x580x320
CCA-02E/S3-7LD	RED + YELLOW + GREEN	3	6W	24	230x870x320

DIMENSIONAL DRAWING

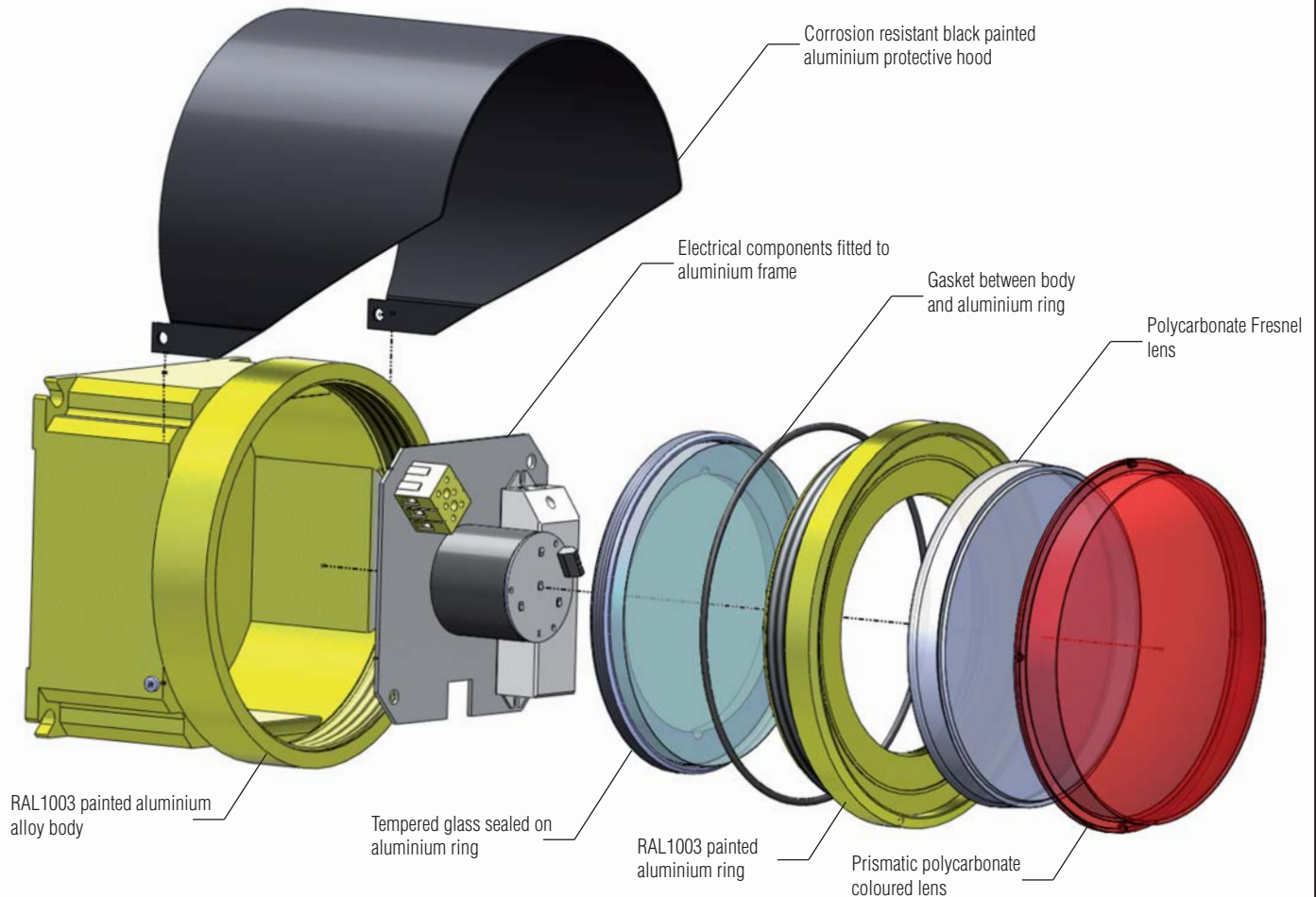


Accessories and spare parts available on request for CCA-02E/S...LD

ILLUSTRATION	DESCRIPTION	FEATURES	CODE	KEY
	Coloured prismatic polycarbonate lens	Red lens	G-572R	
		Yellow lens	G-572G	
		Green lens	G-572V	
	Fresnel lens	Material: polycarbonate	G-573	
	Protective hood	Material: Corrosion resistant black painted aluminium	K-320	
	Electronic power supply	240V \pm 10%	RV-11LED	
	Gasket	Material: NBR	K20-131	
	LED plate	Red LED board	G-614R	
		Yellow LED board	G-614G	
		Green LED board	G-614V	
	Cable gland	For models and codes, visit www.cortemgroup.com	FB2NBK FGAB2NBK	 

CCA-02E/S...LD traffic light features

EXPLODED DIAGRAM OF CCA-02E/S1-3LD TRAFFIC LIGHT



WIRING DIAGRAM

